

# Westwood Regional Jr./Sr. High School

701 Ridgewood Road  
Township of Washington  
New Jersey 07676  
Tel 201.664.0880  
Fax 201.722.1542  
www.wwrds.org  
CEEBS Code: 311-615

# School Profile 2008-2009

## ADMINISTRATION

**Superintendent**  
Geoffrey Zoeller

**Assistant Superintendent**  
Matthew Murphy, Ed.D.

**Principal**  
Thomas Gorman

**Assistant Principal**  
Charles Seipp

**Dean of Students**  
Frank Connelly

## GUIDANCE STAFF

**Supervisor of Guidance**  
Joan Mei Ext. 2068  
jmei@wwrds.org

**Counselors**  
Kelly Clark Ext. 2070  
kclark@wwrds.org

Ara Debrody Ext. 2069  
adebrody@wwrds.org

Brenda Lyons Ext. 2055  
blyons@wwrds.org

Meredith Mirabile Ext. 2071  
mmirabile@wwrds.org

Amy Wasser Ext. 2063  
awasser@wwrds.org



***“Excellence in Education”***

## COMMUNITY

The Westwood Regional School District serves the Borough of Westwood (population 10,400) and the Township of Washington (population 9,800). These two communities are located approximately fifteen miles northwest of midtown Manhattan. Such proximity provides incomparable educational, cultural, and recreational opportunities, while preserving the charm and lifestyle of a small suburban town. The majority of parents are engaged in professional and managerial occupations with incomes in the middle and upper-middle brackets. The district serves approximately 2,700 students and includes four K-4 neighborhood schools, a 5-6 upper elementary school, and a junior-senior high school.



## WESTWOOD REGIONAL JR./SR. HIGH SCHOOL

Westwood Regional Jr./Sr. High School is a six-year comprehensive public junior/senior high school with an enrollment of approximately 1150. The current high school population is approximately 720 with 151 students enrolled in the 12th grade. The program of studies features a wide range of academic courses taught on three levels of instructional demand (Advanced Placement, Honors, and College Prep). The school follows a four-day schedule with an eight period rotation. Each period is 43 minutes in length.

Westwood Regional Jr./Sr. High School is fully accredited by the State of New Jersey Department of Education and the Middle States Association of Colleges and Secondary Schools.

**Westwood Regional Jr./Sr. High School is ranked as one of the top 75 New Jersey public high schools by *NJ Monthly* (September 2008).**

### Scholars' Recognition

Ten students were selected as *Edward J. Bloustein Distinguished Scholars* for 2008.

### Post Secondary Education for the Class of 2008

(161 Graduates)

	Number	Percentage
Four Year Colleges	111	69%
Two Year Colleges	39	24%
Total	150	93%

(Among 161 graduates, 150 attended college)

### Graduation Requirements for the Class of 2009

135 credits are required for graduation. Full year courses receive 5 credits. Semester courses receive 2.5 credits.

#### Subject Requirement:

English .....	20 credits
World History .....	5 credits
U.S. History .....	10 credits
Mathematics .....	15 credits
Science .....	15 credits
World Language .....	5 credits
Physical Education/Health.....	16 credits
Visual & Performing Arts .....	5 credits
Practical Arts .....	5 credits
Electives.....	40 credits

### Weighting

Grade	COURSE LEVEL		
	AP	Honors	CP
A+.....	5.3	4.8	4.3
A.....	5.0	4.5	4.0
A-.....	4.7	4.2	3.7
B+.....	4.3	3.8	3.3
B.....	4.0	3.5	3.0
B-.....	3.7	3.2	2.7
C+.....	3.3	2.8	2.3
C.....	3.0	2.5	2.0
C-.....	2.7	2.2	1.7
D.....	1.0	1.0	1.0
F.....	0	0	0

## Honors and Advanced Placement Classes

The following courses receive a weighted grade on the transcript in recognition of the advanced nature of the coursework:

### English

English I Honors, English II Honors, English III Honors, English IV Honors, English IV Current Issues Honors, AP English

### Social Studies

World History Honors, U.S. History I Honors, AP U.S. History II, AP World History, AP Psychology

### World Language

Spanish III Honors, Spanish IV Honors, AP Spanish, French III Honors, French IV Honors, AP French

### Science

Biology Honors, Physics Honors, Chemistry Honors, AP Chemistry, AP Biology

### Mathematics

Algebra II Honors, Functions, Statistics, & Trigonometry Honors, Pre-Calculus & Discrete Mathematics Honors, AP Statistics, AP Calculus AB

## Advanced Placement

In May of 2008, a total of 77 students took 136 Advanced Placement examinations in 9 different subjects. 62% of the scores were 3 or above. 25% of the student body in grades 11 and 12 was enrolled in Advanced Placement classes.

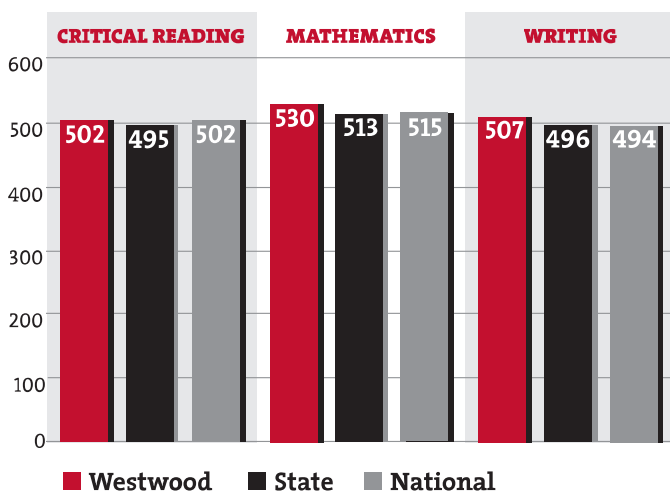
AP Score	# of Students Receiving this Score	% of Total
5	20	15%
4	33	24%
3	31	23%

## 2008 SAT Subject Tests

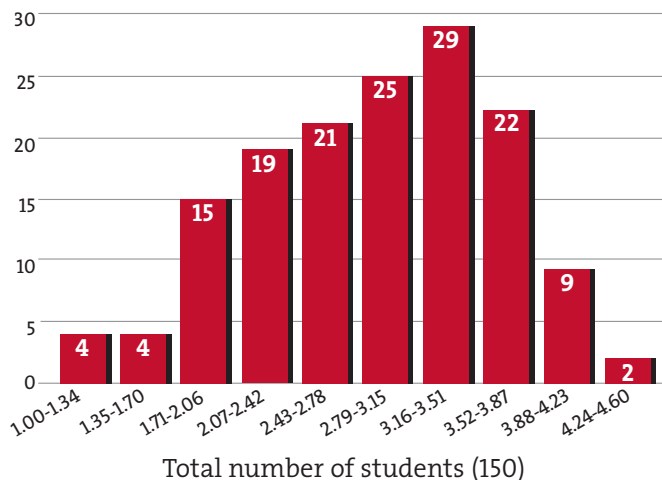
(34 students in Grades 9-12 took 60 SAT Subject Tests)

Subject	Mean Scores
Biology-Ecology .....	623
Biology-Molecular .....	583
English Literature .....	584
Math Level II .....	682
U.S. History .....	577

## SAT Reasoning Test Results (Mean Scores) for the Class of 2008



## Weighted Academic GPA – Class of 2009 (One new enrollment not included)



# College Acceptances for the Class of 2008



Adelphi University  
Alaska Pacific University  
Alfred University  
Alvernia College  
American University  
University of Arizona  
Art Institute of Boston  
Art Institute of Ft. Lauderdale  
Auburn University  
Averett University  
Barry University  
Bergen Community College  
Berkeley College  
Binghamton University  
Bloomfield College  
Bloomsburg University  
Boston University  
Bowling Green State University  
Brookdale Community College  
Cabrini College  
Caldwell College  
Campbell University  
Catholic University of America  
Centenary College  
College of Charleston  
Clemson University  
Coastal Carolina University  
Colby-Sawyer College  
University of Colorado at Boulder  
Colorado State University  
University of Connecticut  
Cornell University  
University of Dayton  
Delaware Valley College  
University of Delaware  
DeSales University  
Dominican College  
Drew University  
Drexel University  
Earlham College  
East Carolina University  
East Stroudsburg University  
Elizabethtown College  
Elmira College  
Fairleigh Dickinson University  
Felician College  
Florida Gulf Coast University  
Fordham University  
The George Washington University  
University of Georgia  
Gettysburg College  
University of Hartford  
Hartwick College  
Hofstra University  
Houghton College  
Howard Community College  
Immaculata University  
Indiana University of Pennsylvania  
Ithaca College  
John Jay College of Criminal Justice  
Kean University  
Kutztown University  
La Salle University  
Lackawanna College  
Lafayette College  
Lehigh University  
Liberty University  
Lock Haven University  
Long Island University  
Louisiana State University  
University of Louisville  
Loyola College in Maryland  
Manhattan College  
Marist College  
Marquette University  
University of Maryland  
Marymount Manhattan College  
Marywood University  
Massachusetts College of Pharmacy  
University of Massachusetts  
Mercyhurst College  
University of Miami  
Monmouth University  
Montclair State University  
Mount Saint Mary College  
Muhlenberg College  
University of New Hampshire  
University of New Haven  
New Jersey Institute of Technology  
College of New Jersey  
New York Institute of Technology  
New York University  
Nichols College  
University of North Carolina  
North Carolina School of the Arts  
North Carolina State University  
Northeastern University  
Nyack College  
Oberlin College  
Ohio University  
Pace University  
Parsons School of Design  
Pennsylvania State University  
Philadelphia University  
University of Pittsburgh  
Plymouth State University  
Pratt Institute  
Purchase College  
Purdue University  
Quinnipiac University  
Ramapo College  
Rensselaer Polytechnic Institute  
University of Rhode Island  
Richard Stockton College  
Rider University  
Roberts Wesleyan College  
Rochester Institute of Technology  
University of Rochester  
Roger Williams University  
Rowan University  
Rutgers University  
Sacred Heart University  
Saint Anselm College  
Saint Joseph College  
Saint Joseph's University  
Saint Peter's College  
Salisbury University  
Salve Regina University  
School of the Museum of Fine Arts  
School of Visual Arts  
University of the Sciences  
University of Scranton  
Seton Hall University  
Siena College  
University of South Carolina  
Southern Connecticut State University  
Southern Vermont College  
Springfield College  
St. John's University  
St. Joseph's College  
St. Thomas Aquinas College  
State University of New York  
Stevens Institute of Technology  
Stonehill College  
Stony Brook University  
Syracuse University  
Temple University  
University of Tennessee  
Towson University  
Villanova University  
Virginia Polytechnic Institute  
Wagner College  
Washington and Jefferson College  
Washington College  
Wesley College  
West Chester University  
West Virginia University  
Western Connecticut State University  
Western New England College  
Wilkes University  
William Paterson University  
Worcester Polytechnic Institute